



# GAT MONTHLY MEMBERSHIP PROGRESS REPORT

Results as of: 5/31/2022

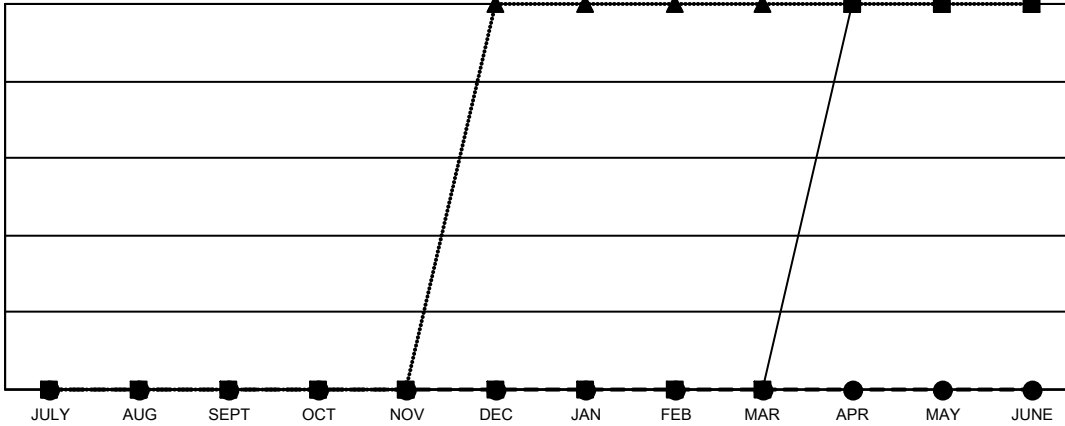
Multiple District 39

LOCATION: IDAHO

Clubs			
RESULTS FOR 2021-2022			
QUARTER	NEW CLUB GOAL	NEW CLUBS	DROPPED CLUBS
JULY/AUG/SEPT	0	0	1
OCT/NOV/DEC	0	0	0
JAN/FEB/MAR	0	0	1
APR/MAY/JUNE	1	0	0

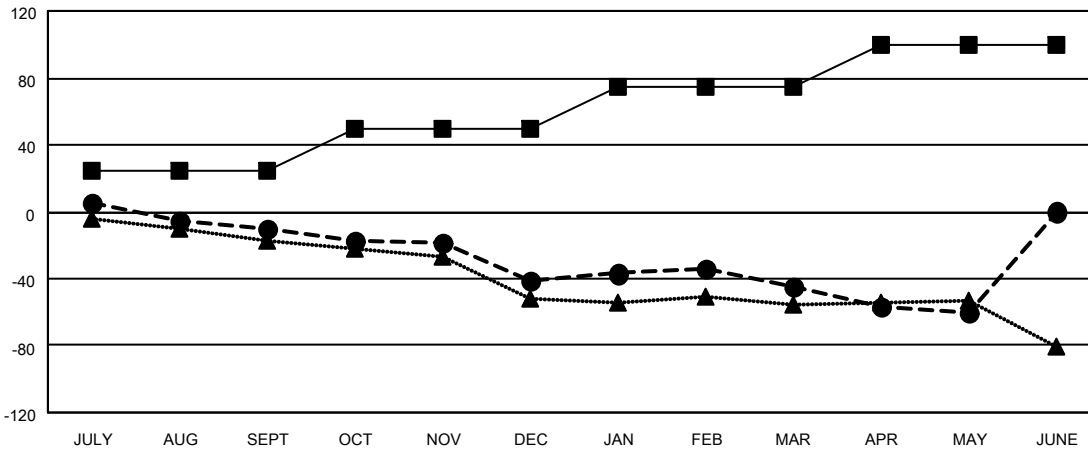
Members			
RESULTS FOR 2021-2022			
QUARTER	MEMBER GROWTH NET GOAL	MEMBER GROWTH ACTUAL	DROPPED MEMBERS ACTUAL (including transfers)
JULY/AUG/SEPT	25	36	45
OCT/NOV/DEC	25	28	58
JAN/FEB/MAR	25	42	45
APR/MAY/JUNE	25	27	41

GOALS AND ACTUAL NEW CLUBS CUMULATIVE



- CURRENT YEAR GOALS FOR NEW CLUBS
- CURRENT YEAR ACTUAL NEW CLUBS
- ▲- LAST YEAR ACTUAL NEW CLUBS

GOALS AND ACTUAL MEMBERS CUMULATIVE



- MEMBER GROWTH NET GOAL
- MEMBER GROWTH ACTUAL
- ▲- LAST YEAR MEMBERSHIP ACTUAL

<b>DROPPED CLUBS: 2</b>	<b>33 CLUBS OF 55 ADDED 1 OR MORE NEW MEMBERS</b>	<b>GENDER DISTRIBUTION</b>	
<b>DROPPED MEMBERS</b>		MALE	694 (59.47%)
DECEASED	25	FEMALE	473 (40.53%)
CLUB CANCELLED	0	NON BINARY	0 (0.00%)
OTHER	164	PREFER NOT TO ANSWER	0 (0.00%)
<b>TOTAL</b>	<b>189</b>	<b>TOTAL FAMILY UNIT MEMBERS 306</b>	
<a href="#">CLICK HERE FOR CUMULATIVE MEMBERSHIP DATA</a>		<b>FAMILY MEMBERS PAYING HALF DUES 157</b>	